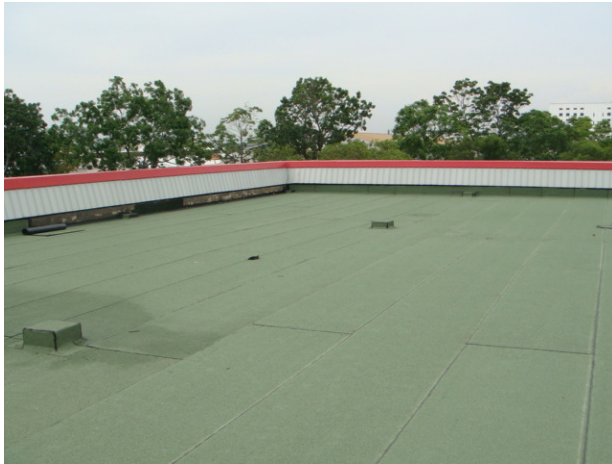


▶ Description



TamSeal 4000E is a 4.0mm APP Modified Torch-Applied Bituminous Waterproofing Membrane. The surface is mineral slate, coated on a heavy duty high strength, non-woven polyester mat. The mineral slate provides excellent UV protection and is suitable for light pedestrian traffic. The rigid nature coupled with excellent UV resistance of the membrane provides for long weathering and maintains the properties for an extended period of time.

▶ Key Benefits

- Excellent UV resistance.
- Excellent rigidity, reduced risk of site damage by other trade works.
- Easy application, withstands thermal shocks.
- Resistance to waterborne chemical attacks.
- Excellent resistance to atmospheric pressure.

▶ Typical Applications

TamSeal 4000E is used as an exposed waterproofing membrane most suited for concrete roof decks where light pedestrian traffic is required. The membrane is applied by heating gently the underside with a propane gas torch causing the surface to melt and subsequent adhesion to the primed surface. It is used as a single layer system with relatively simple and easy installation that requires no curing. It is accessible immediately after the membrane is laid.

▶ Technical Data

TamSeal 4000E	
Total Thickness	4.0mm
Membrane Weight	4.2kg/m <sup>2</sup>
Membrane Tensile Strength	> 700N/5cm
Membrane Elongation	40%
Tear Resistance	600N
Resistance to water pressure	> 60kpa
Membrane resistance to puncture	1155N
Water vapour permeability	Nil

All technical data stated herein is based on tests carried out under laboratory conditions.

▶ Application Guidelines

**Surface Preparation**

- All concrete surface / substrate must be thoroughly clean, dry and free of any contaminants such as dust, oil, grease, water, laitance and any foreign materials that will prevent a proper bond during installation.
- Any loose particles should be removed using a scraper or any mechanical means such as a scrubber. Avoid using any cleaning aid containing oil, wax pigment or resin.

**Application Method**

- Place unrolled membrane onto the designated concrete surface / substrate.
- Unroll membrane and allow it to remain flat while inspecting any unevenness on the surface (due to over stacking at site).
- Roll back membrane without changing the original position and unroll again slowly, this time with the propane gas torch gently heating the underside of the membrane.

# TamSeal 4000E

4.0mm Mineral Coated, Torch Applied Membrane



## ▶ Waterproofing

Page 2 of 2

- Swing the torch left to right in a slow motion observing the melting process of the membrane.
- As the initial bottom layer starts to liquefy, the membrane is ready to be laid on the concrete substrate.
- Lapping between two membrane sheets should not be less than 50mm.
- Extreme caution should be taken when welding the membrane laps to ensure it is fully heat welded and finished.

## ▶ Storage

TamSeal 4000E should be stored at room temperature (min 10°C and max 38°C), kept dry and out of direct sunlight. If these conditions are maintained and the product packaging is unopened, then a shelf life of 1 year can be expected.

## ▶ Health & Safety

TamSeal 4000E should only be used as directed. We always recommend that the Health & Safety data sheet is carefully read prior to application of the material. Our recommendations for protective equipment should be strictly adhered to for your personal protection. The Health & Safety data sheet is available upon request from your local TAM International representative.

[www.taminternational.com](http://www.taminternational.com)

TAM Australia

+61 8 8340 4166

TAM Hong Kong

+852 2690 3723

TAM India

+91 92 7222 5905

TAM Indonesia

+62 21 7801414

TAM Singapore

+65 6296 0364

TAM Taiwan

+886 49 2263 066

TAM UK

+44 2476 253098